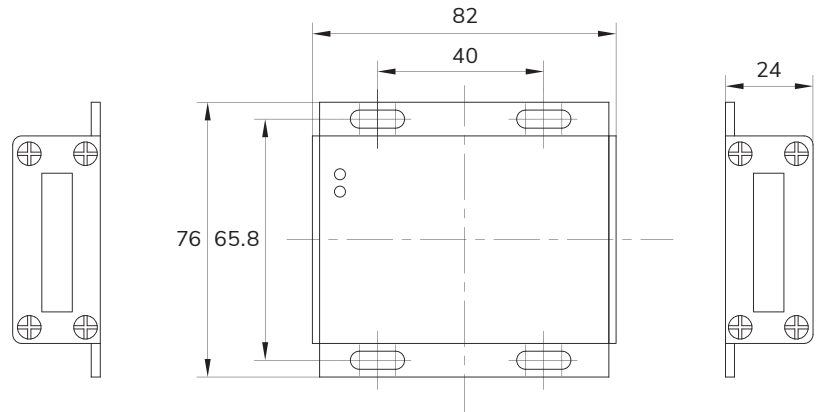




DIMENSIONS / 尺寸



FEATURES & APPLICATIONS / 特点和用途

- Compact Design
- Wide Input Range, 0.4 ~ 6 mV/V
- Four 350 Ω Sensors Can Be Connected And Advantage Signal Output
- Using Imported Electronic Components, With High Frequency Response And Longterm Stability, Max. Accuracy $\pm 0.05\%$ F.S.
- Input Power Reverse Protection And Output Short-Circuit Protection
- Suitable For All Kinds Of Industrial Applications
- 紧凑型模拟放大器
- 输入范围: 0.4 ~ 6mV/V
- 负载能力强, 可连接4只350Ω传感器
- 采用原装进口电子元器件, 响应频率高, 长期稳定性好, 综合精度达到 $\pm 0.05\%$ F.S.
- 输入电源反接保护和输出短路保护
- 适用于各类工业应用场合

SPECIFICATIONS / 详细描述

TECHNIQUE / 技术指标

GENERAL	概括	
Bandwidth (Hz)	频宽(Hz)	100 / 5000 Hz
Gain Adjustment	增益调节	$\pm 80\%$ F.S.
Offset Adjustment	偏移量调节	$\pm 50\%$ F.S.
Accuracy	综合精度	0.05% F.S.
Zero Drift	零位漂移	$\pm 0.2 \mu\text{V}/^\circ\text{C}$
Gain Drift	增益漂移	$\pm 25 \text{ ppm}/^\circ\text{C}$
Integrated Pigtail Filter	集成尾纤过滤器	50 / 60 Hz Rejection
CMRR	共模抑制比	120 dB
Current Consumption (No Load)	电流消耗 (空载)	100 mA
IP Rating	IP等级	IP64
Weight	重量	0.1 kg
INPUT	输入	
Differential Input	差分输入	$\pm 0.4 \sim \pm 6 \text{ mV}/\text{V}$
Bridge Excitation	桥路激励电压	5 VDC
Input Load	输入负载	4 Pcs 350Ω Sensors / 传感器
Channel Qty	输入通道	One Input / 1路输入
Electronic Identification	标定方式	Potentiometer Regulation / 电位器调节
OUTPUT	输出	
Analog Output Bandwidth	模拟输出频宽	100 Hz / 5000 Hz
Bipolar Output	双极输出	$\pm 5 \text{ VDC}$, $\pm 10 \text{ VDC}$, 0 ~ 20mA Or 4 ~ 20mA
Analog Noise Output	模拟噪声输出	< 12 mVp-p
Minimum Load Impedance	最小负载阻抗	VOUT: 15000, IOUT: 300Ω
Connectors	连接器	2 EDG-3.81-10 / 2 EDG-3.81-3
ENVIRONMENT	使用环境	
Operating Temperature	操作温度	-25 ~ 65°C
Storage Temperature	储存温度	-40 ~ 125°C
Relative Humidity	相对湿度	$\leq 85\%$ RH